

BE A TRANSLINK ECO HERO

Travelling with Translink
to a Greener Future



WE ARE TRANSLINK

We are travel superheroes who work
all over Northern Ireland!



We look after...

1400

amazing buses that zip around every city, town and village.

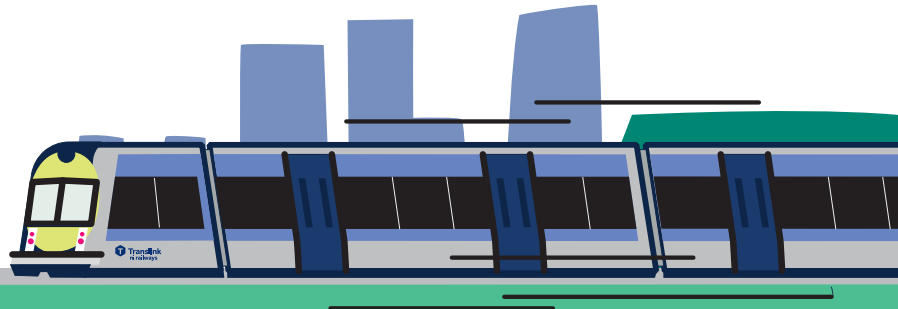


Translink makes sure your journeys are safe, fun, and full of adventure. And that's not all. We're also on a mission to fight climate change. We're working to help build a future where we can explore the world without harming the planet.

You can play your part in fighting climate change by simply hopping on board the bus or train to become a Translink Eco Hero!

45

awesome trains that zoom through towns, cities and the countryside.





TELL US ABOUT YOU

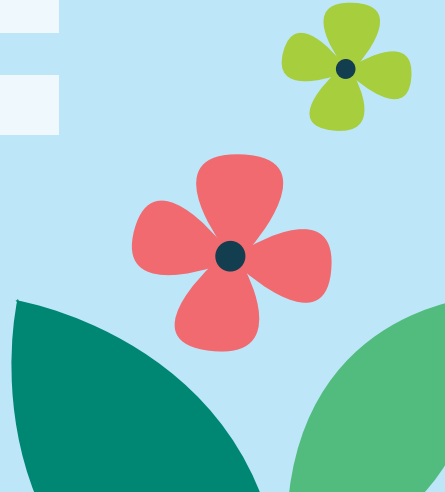
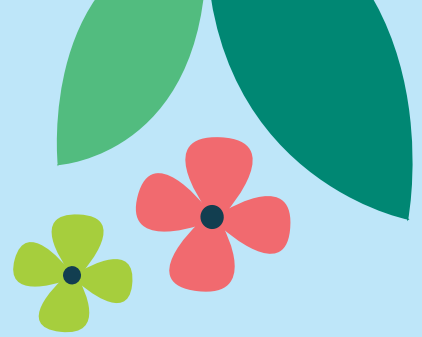
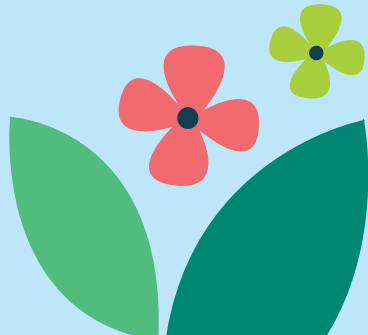
My name is

I am

years old

I live in

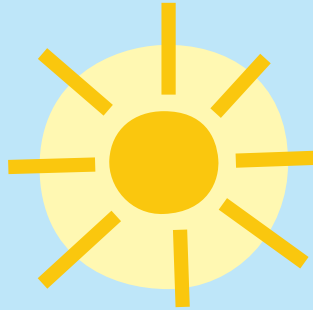
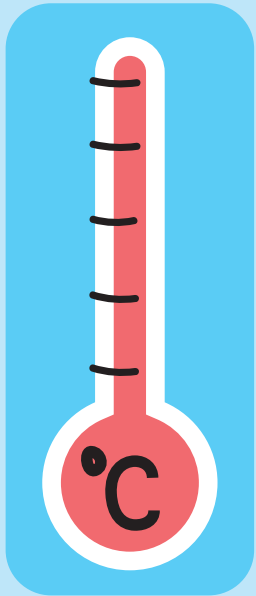
My favourite journey is



WHAT IS CLIMATE CHANGE?

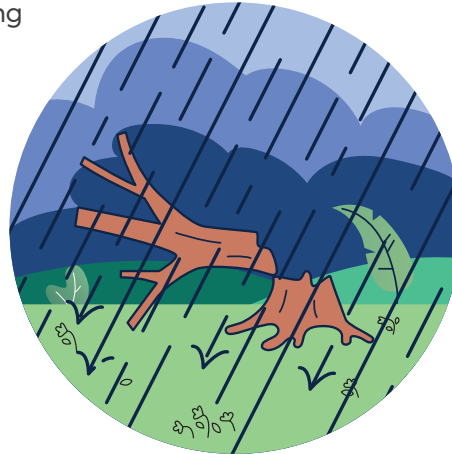
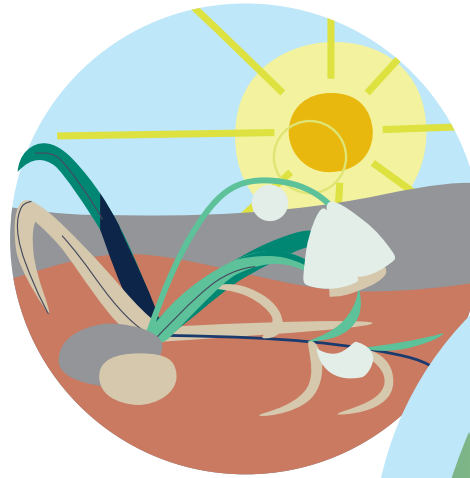
Climate change is a big problem happening in the world. It's like the Earth getting sick because too much heat is getting trapped in the air. Then the Earth gets too warm, just like when we wear too many clothes on a hot sunny day.

We all have a part to play in fighting climate change, and Translink are taking action in a lot of ways, by improving passenger services, working hard to get more people to use the bus or train and the development of our green roof bus shelters.



One of the reasons for climate change is that when we drive or travel in cars a lot, they make a gas called carbon dioxide (CO₂) that stays in the air and makes it warmer.

Climate change can make the weather on earth go a bit wild, with stronger storms, hotter temperatures, forest fires, rising seas and even some places getting too much rain, causing flooding, or not enough rain, causing drought.

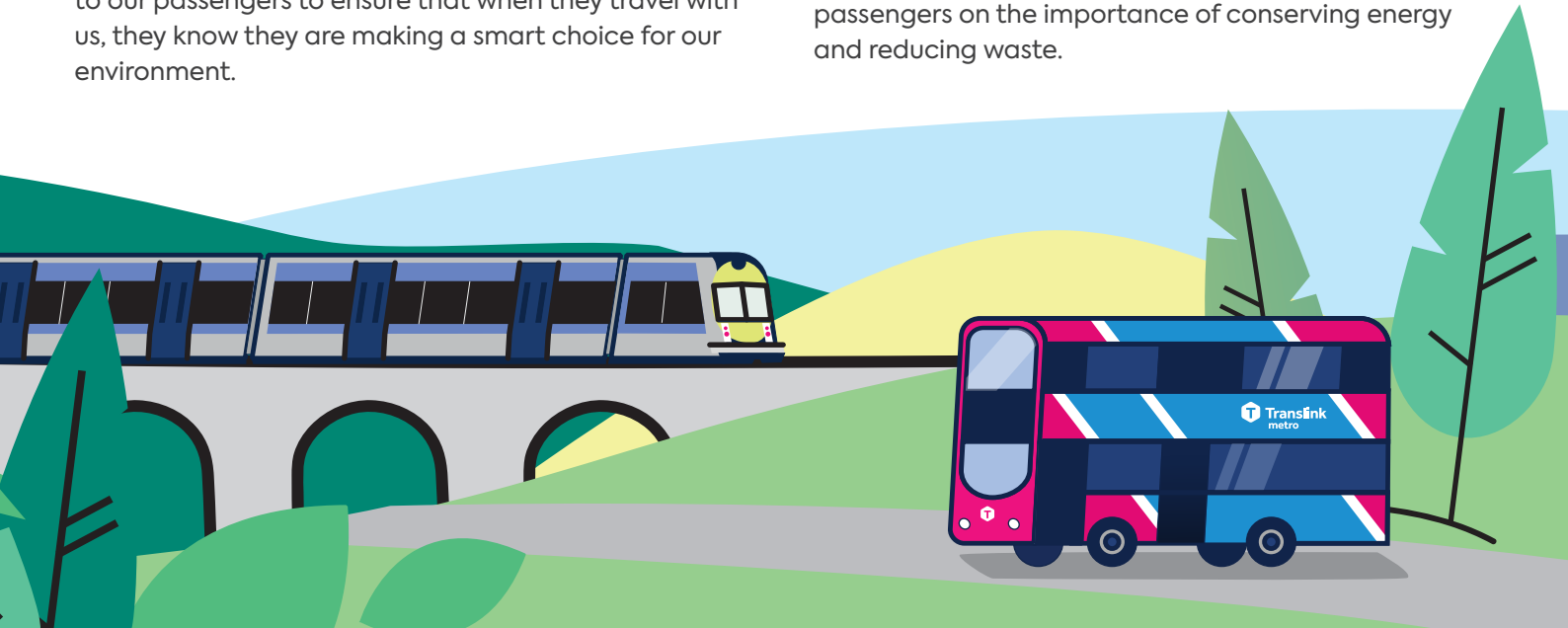


WHAT ARE TRANSLINK DOING TO FIGHT CLIMATE CHANGE AND BE ECO-HEROES?

As Northern Ireland's main public transport provider, Translink knows we have a responsibility to do our part in protecting the planet. Translink's Metro service in Belfast carries 25 million passengers per year. We owe it to our passengers to ensure that when they travel with us, they know they are making a smart choice for our environment.

How do we do this?

We're planting trees, running recycling programs, and spending money on renewable energy sources to create a greener tomorrow. We also educate passengers on the importance of conserving energy and reducing waste.



We also champion special initiatives, using eco-friendly buses and trains, to reduce our carbon footprint.

Using public transport is a key way you can help fight climate change: making your journey by buses and trains instead of cars helps reduce the harmful gases that make our planet too hot.

Translink's climate action pledge is our promise to take big steps in helping the planet we all share fight against climate change. We've committed to reducing the

amount of harmful gases put into the air by 50% before the year 2030. To do this, Translink are introducing new state-of-the-art electric buses for even cleaner journeys - so the more people use these and our low emission fleet, the better for the planet and the air we breathe.

Translink also use hydrogen-powered buses! Hydro-what? Hydrogen! It's a clean energy source that doesn't harm the environment. So next time you hop on a Translink bus, remember, you're helping fight climate change too!



HOW YOU CAN BE AN ECO HERO

Choosing to take your journey by public transport means you are picking a sustainable, eco-friendly way to travel.

By taking the bus or train, you (yes you!) are doing your bit to lower carbon emissions, reducing the amount of harmful greenhouse gases released into the atmosphere.

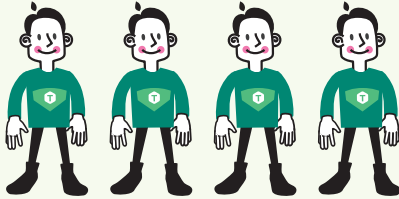


Public transport can carry a lot more passengers at once, as opposed to only a few people in a car.

A single bus can carry 105+ passengers: whereas it would take at least 26 full cars to carry the same amount of people. That's 26 cars emitting harmful gases, versus one eco-friendly bus with zero emissions. The bottom line? More people need to be travelling by public transport!

Did you know that hopping on public transport can be a super fun adventure? Not only do you get to zoom around town, but you also have a chance to meet new friends along the way!

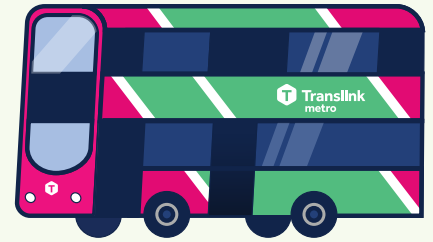
Whether you're waiting at the bus stop or riding the train, you might strike up a chat with someone new and learn all sorts of cool stuff about them. Plus, walking to and from the bus or train stop is a great way to stay active and healthy.



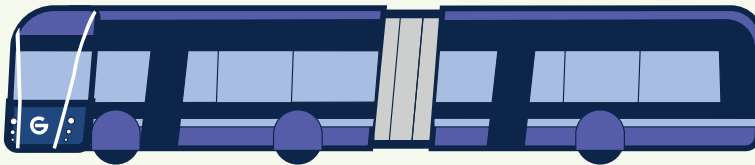
105+ People can fit in...



26 Full cars
(4 people per car)



2 Double decker buses



1 Glider

WHAT IS A GREEN ROOF?

We're glad you asked
(we're pretty proud of them!)

Green roofs are like gardens on top of bus shelters.

Instead of plain roofs, the roof of your bus shelter on the Shankill Road, (the first area to get green roofs) will be covered in living plants, marking the beginning of Translink's Bus Shelter Improvements initiative to implement more green roofs across Northern Ireland in the coming years.

Translink are putting green roofs on top of our bus shelters to do our bit to help Belfast and other cities across Northern Ireland fight climate change.



HOW GREEN ROOFS WORK

The Science Bit

Keeping it cool

Urbanisation happens when cities get bigger, and this growth can make cities really hot. Our green roofs are like nature's air conditioners. They make cities cooler by blocking the sun's heat.

Breathing easy

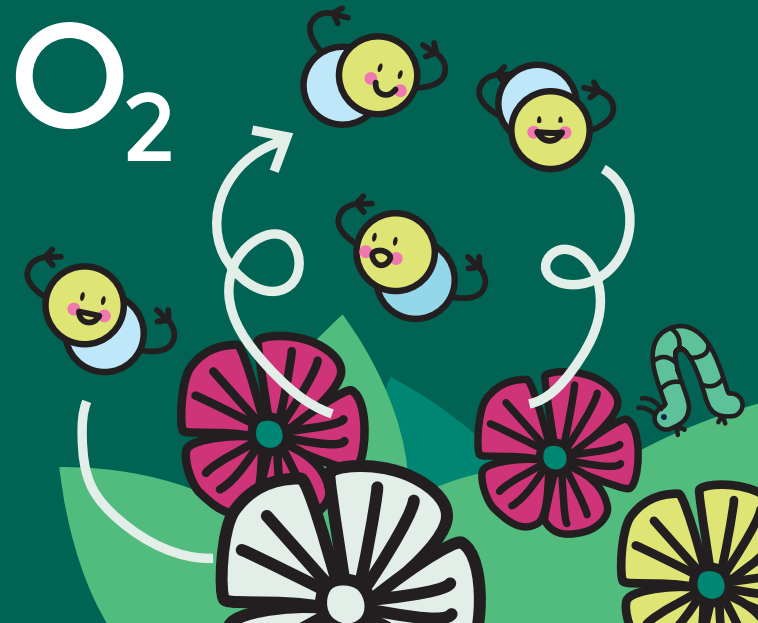
Our cities, like Belfast and Derry–Londonderry, have a lot of dust, like many other towns across Northern Ireland. Green roofs on bus shelters act like magnets to catch these tiny dust particles, making the air we breathe cleaner and healthier.

They also take in carbon dioxide, a gas that makes our planet warmer, and turn it into clean, fresh oxygen.

A biodiversity boost

Biodiversity is when plants, animals, and insects live together in harmony. Biodiversity is important, as having a wide range species helps keep our planet balanced and healthy. Just like how having lots of different friends makes life more exciting and fun!

Green roofs are part of this family and create homes for insects, butterflies, and birds.

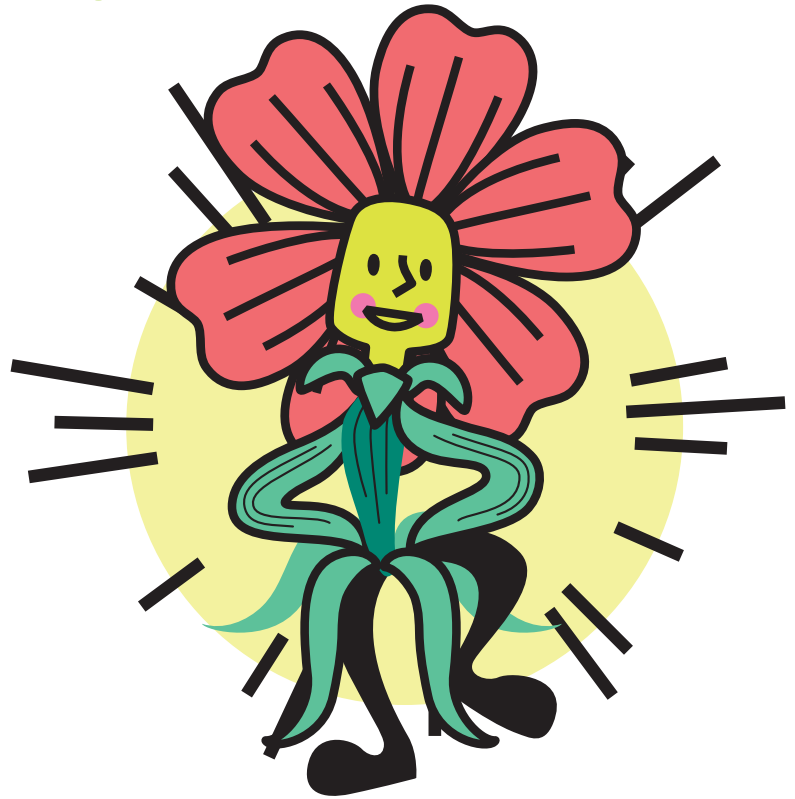


WHAT ARE GREEN ROOFS FOR BUS SHELTERS MADE FROM?

The green roofs for Translink's bus shelters are a specially designed roof and tray system that sits above the shelter.

The materials used in the green roof are 100% recycled or upcycled. All materials are UK-sourced where possible, and nothing goes to landfill.

A special soil recipe is created and put into the roof trays, with a perfect mix of compost, tiny stones, and nutrients to help plants grow strong, deep roots, allowing flowers to flourish and do their job in supporting the fight against climate change.



Twice a year a team of Translink staff will visit the bus shelters with green roofs to weed and trim the plants, adding fertiliser to help them grow.

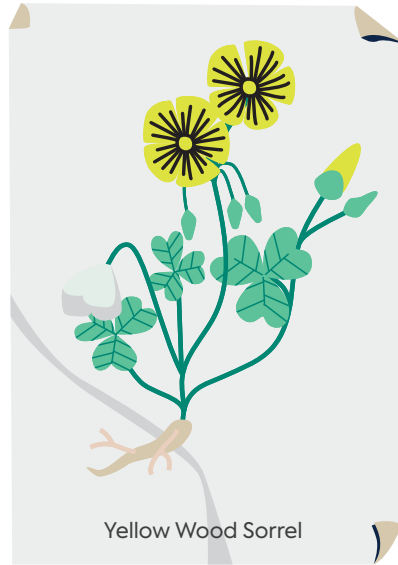
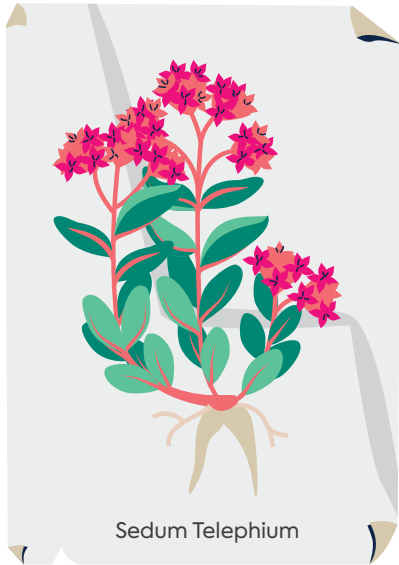


WHAT PLANTS GROW ON GREEN ROOFS

Think of green roofs as nature's hairdos for bus shelters.

What kinds of plants do we use? Loads of different types! Sedums, grasses and wildflowers are all planted

on the roofs of bus shelters. These superhero plants don't mind small spaces and make our bus stops cool and colourful.



Get creative and colour in your own green roof shelter!



GREEN ROOF CHALLENGES

O C D F C Y U H O F S R E P G J O H E L
D L G G R P F X A T Y I T R C L D V E E
L I F N I I L G M U S O V E E E N W V N
T M I I S C H A N G E L Y N R J Y R F Z
U A M S I E N O I T A T S E R O F E D P
K T M I S S N S F S W E H W G M K G B E
R E Y R T D U O B O E P K A P I K A C S
A O O X I I D S Z R S A E B P S D N E E
S Y K D G W G O T O F H Q L I A E X E L
E H F L O O D A M A E T C E P I T M M B
J S C D U Z M T T A I B O S C R E H I A
P S U P P Y A T L I F N A T E Q W V S W
T T N O O G W T A X O T A M B E M T S E
H C X U H L H A T Y I N E B A C D F I N
G A Z N Y N L G R O C P R T I I R G O E
U P R P O B E U N M R I H D M L L C N R
O M C I G B R E T E I E L H J O I K S Q
R I X V F C R M R I R N J O B X S T T S
D F J U L I N A V G O K G A P T Y N Y O
G N U I N N K H C D G N L J D Q U E G U

Word search

Can you find all the words relating to climate change in the puzzle below?

Weather

Adaptation

Ice

Health

Sustainability

Atmosphere

Crisis

Deforestation

Change

Impacts

Flood

Rising

Extreme

Global

Sea

Renewables

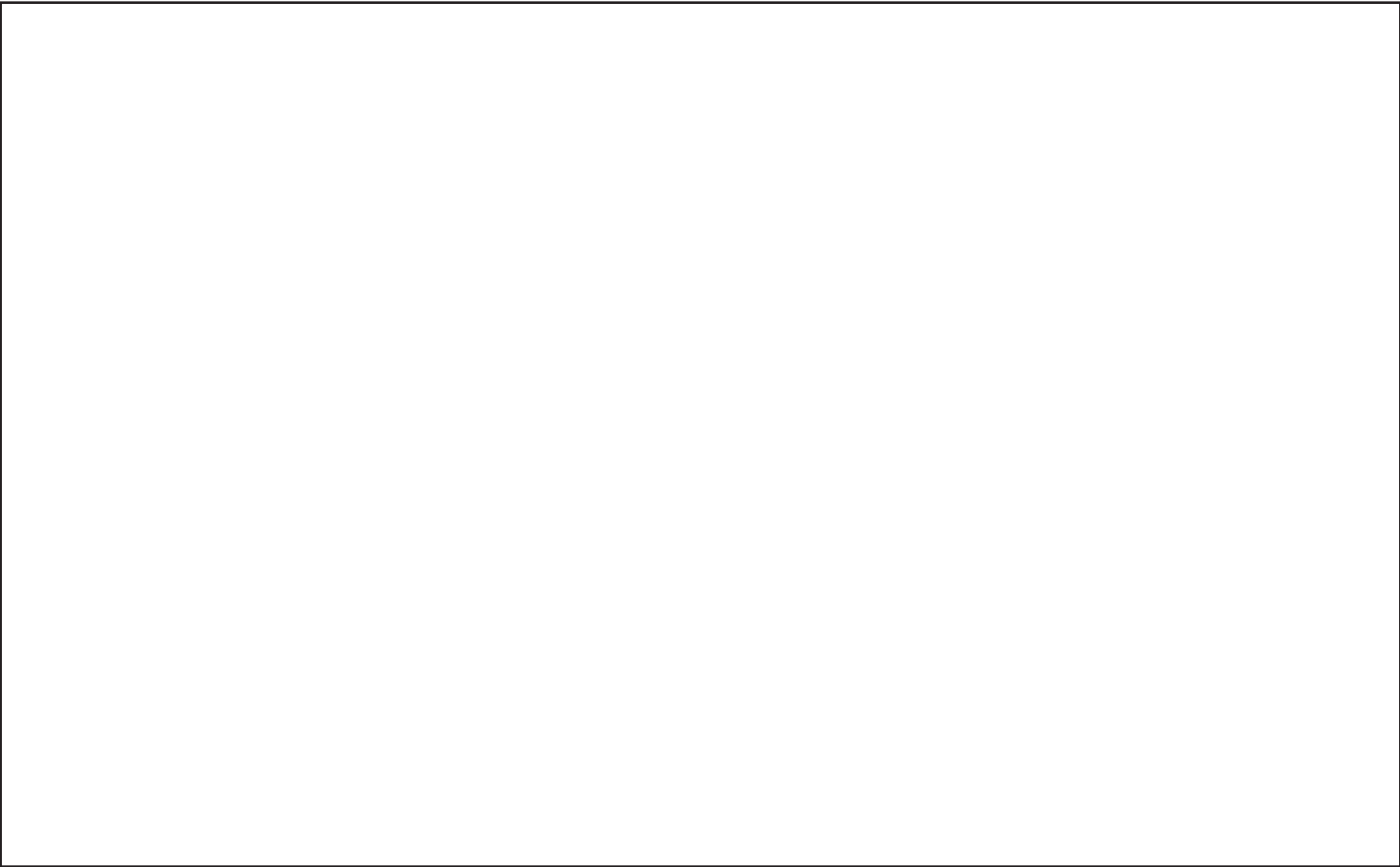
Greenhouse

Emissions

Warming

Climate

Draw yourself as a Translink Eco Hero





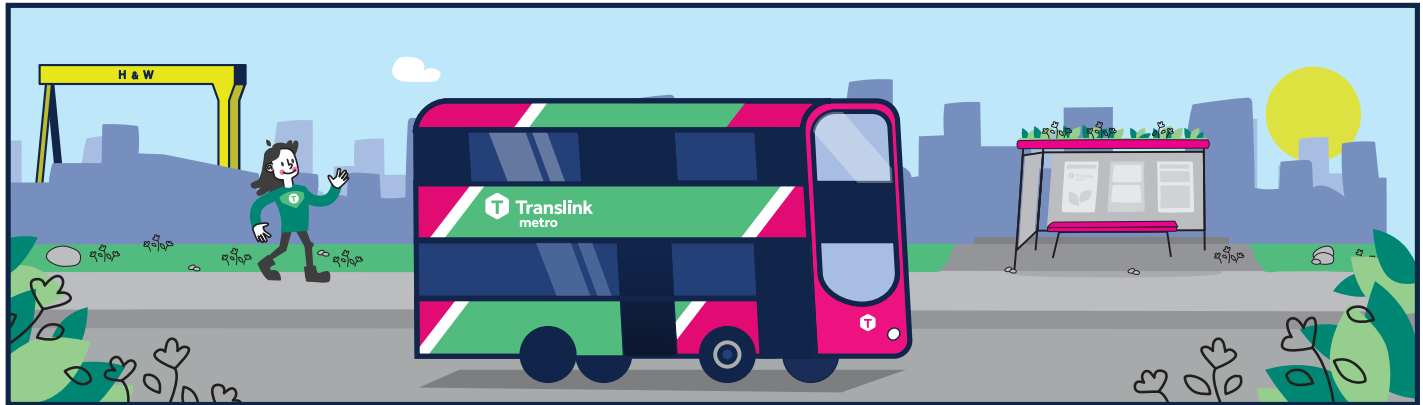
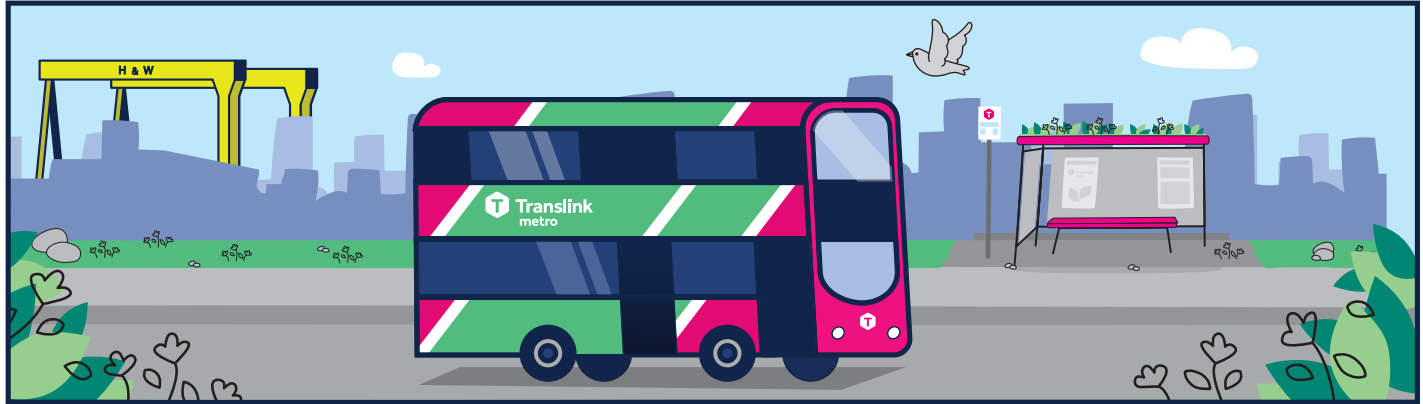
The future is green

You, our young Eco Hero, can make a big difference! Imagine a future where every bus shelter has a green roof! Our cities would have more fresh air, as well as more cool places to wait under for the bus: not to mention a whole lot of happy nature.

Translink are fighting climate change one ride at a time. We're not just moving people – we're moving everyone towards a more sustainable future.

Even small actions like choosing to take the bus or train can make a big difference to helping us all care for our Earth. So, when you hop on a Translink bus or train, know that you're part of the team, helping to save the day and protect our planet.

Spot the Difference



Answers on inside the back page

Word Search

U C D F L M C N O F S R E P G J T H Z D
G B G S S E S N U R A I L W A Y E B U S
A T C N I T I G M G R E E N R O O F S T
G R E A N A O O F S R I H D Y L L R C E
X A M S R O N O W I L D F L O W E R S D
M N M T S B N S F B W E T T R A M N R E
B S O D I V O R S I M Y E A O R K B B T
V L O E I I D N Z S E A M B O S D I O E
T I E C Y L I N D O T H P T E A E O N M
L N M O S E V E U I R W S E N I G D D P
H K E H E C Y N E C O H E R O E N I I E
P O I N A O S R E N E X A B L E H V O R
B U T T E R F L I E S G I C T E Y E X A
H O B O E W K A P I K A Y D S C D R I T
B S Z R S I A B P S D C R B E I R S D U
C O X Y G E N B S A E X E D M L O I E R
I M C I G N R E L R A N S L I N G T S E
S I X V F P A S S E N G E R B X E Y T S
X F J U L L N A R G O K G A B U N N Y O
D N U I N Y K E C O F R I E N D L Y G U

Can you find all the words relating to climate change in the puzzle below?

Eco Hero

Ecofriendly

Translink

Oxygen

Bus

Railway

Train

Butterflies

Green roofs

Recycling

Hydrogen

Temperature

Carbon Dioxide

Storm

Wildflowers

Passenger

Biodiversity

Metro

Design your own
Translink 'Eco Hero' logo



Pop Quiz



1 How many buses do Translink manage across Northern Ireland?

2 How many passengers per year does Translink's Metro service in Belfast carry?

3 Name 3 things Translink do to fight climate change

4 What are green roofs? (please tick)

Roofs that are painted green to reflect sunlight and reduce heat absorption.

Green roofs are like gardens on top of bus shelters.

Roofs made from recycled materials to promote sustainability.

Roofs with solar panels installed to generate renewable energy.

5 happens when cities get bigger, and this growth can make cities really hot.

6 What 3 things are in the special soil recipe which is used in the green roof trays?

7 How many times per year do Translink's staff visit the green roofs?

8 Name 3 types of things that grow on green roofs

9 How many people can fit in 2 double decker buses?

10 What action can you take to be a Translink Eco Hero?

Answers on inside the back page



CONGRATULATIONS

on completing this
workbook and becoming a

TRANSLINK ECO HERO



Green Roof Challenge Answers

Spot the Difference

1. Crane
2. Rock on left
3. Walking Character
4. Stripe on Bus
5. Bus Hub Cap
6. Bus Headlight
7. Bird Flying
8. Poster in Bus Stop
9. Bus Stop Sign
10. Sun
11. Cloud

Pop Quiz

1. 1400
2. 25 million passengers per year
3. Planting trees, running recycling programs, spending money on renewable energy sources, eco-friendly buses and trains
4. Green roofs are like gardens on top of bus shelters, filled with living plants and insects, providing a home for animals to help boost biodiversity.
5. Urbanisation
6. Compost, tiny stones and nutrients
7. Twice/ 2 times
8. Sedums, grasses and wildflowers
9. 105
10. Take the bus or train rather than driving in a car, encourage other people to take the bus or train, tell people about Translink's work to fight climate change.

Better. Connected for Kids

Let's talk about Translink's Better. Connected Strategy

It's like a super cool plan to make travelling around Northern Ireland even better!

Firstly, we've got "Connecting Communities"

That's all about making sure everyone can easily get to where they need to go, whether it's school, the park, or visiting friends and family.

Then, there's "Climate Action"

Translink is on a mission to help our planet by using greener ways to travel, like electric buses and trains.

Next, we've got "Customer Focus"

Translink wants to make sure every journey is awesome for you, with comfy seats, friendly staff, and cool stuff to see along the way.

After that, there's "Continuous Improvement"

That means always looking for ways to make things even better, like faster trains or new bus routes to cool places.

Last but not least, there's "Health and Wellbeing"

Translink knows that travelling can be fun and good for you too! Walking to the bus stop or train station is a great way to stay active and feel awesome, as well as meet new people!



Translink
Better. Connected